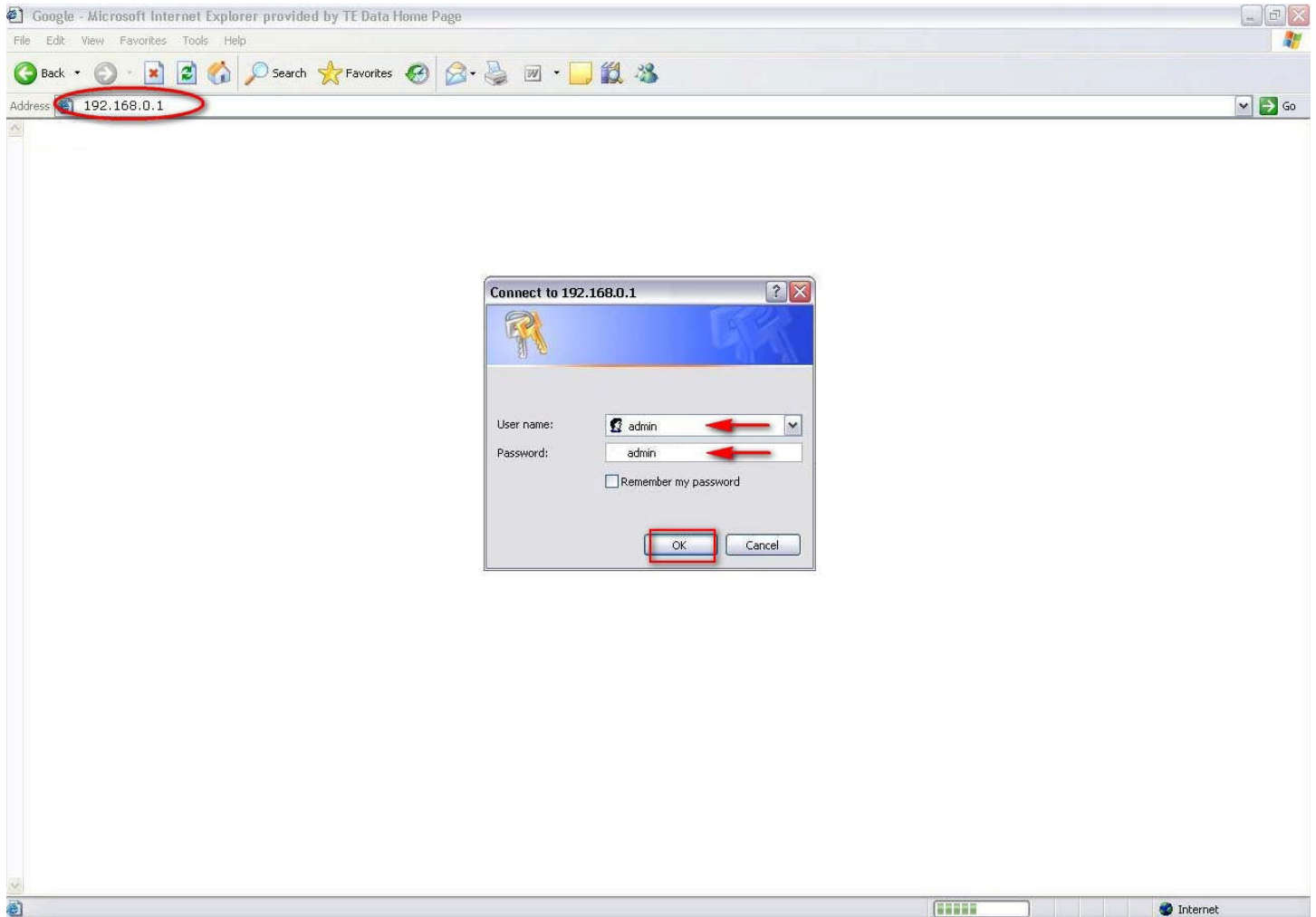


How To Setup Linksys Router [Dynamic Configuration]



- Login into the router with **192.168.0.1** or **192.168.1.1**
- The default Username: **admin**.
- The default password is: **admin**.

Basic Setup - Microsoft Internet Explorer provided by TE Data Home Page

192.168.1.1

LINKSYS®
A Division of Cisco Systems, Inc. Firmware Version: 1.00.09

Wireless-G ADSL Home Gateway WAG200G

Setup

Basic Setup | DDNS | Advanced Routing

Internet Setup

Internet Connection Type

VC Settings

Encapsulation: RFC 2516 PPoE

Multiplexing: LLC VC

Qos Type: UBR

Pcr Rate: cps

Scr Rate: cps

Autodetect: Enable Disable

Virtual Circuit: 0 VPI (Range 0-255)

35 VCI (Range 0-65535)

DSL Modulation: MultiMode

PPPoE Settings

Username: username@tedata.net.eg

Password: *****

Connect on Demand: Max Idle Time 5 Minutes

Keep Alive: Redial period 30 Seconds

Optional Settings (required by some ISPs)

Host Name:

Domain Name:

MTU: Auto

Size: 1500

Network Setup

Router IP

Local IP Address: 192 . 168 . 1 . 1

Subnet Mask: 255 . 255 . 255 . 0

Network Address Server Settings (DHCP)

DHCP Server: Enable Disable DHCP Relay

DHCP Server: . . .

Starting IP Address: 192 . 168 . 1 . 100

Maximum Number of DHCP Users: 50

Client Lease Time: 0 minutes (0 means one day)

Static DNS 1: . . .

Static DNS 2: . . .

Static DNS 3: . . .

WINS: . . .

Time Settings

Time Zone: (GMT-08:00) Pacific Time (USA & Canada)

Time Interval: 3600 seconds

Automatically adjust clock for daylight saving changes.

Save Settings Cancel Changes

- Click **Setup** and then select **Basic Setup** button.
- And then Select **Encapsulation: RFC 2516 PPPOE.**
- And then Select **Multiplexing: LLC.**
- And then Select **Qos: UBR.**
- And then Select **Auto detect: Disable.**
- And then Select **VPI: 0 VCI: 35**
- Then add your **Username** and **password**
- And Click **Save Settings.**

..TE Data

::: Copyright © 2007 . TE Data Support Team . All Rights Reserved :::

::: For Further Informations Call Us At 19777 :::

